

1. General Requirements for Graphics
2. Examples of Point, Line, and Other Types of Graphics
3. Examples of Images and Combination Graphics
4. Requirements and Examples of Graphical Abstract

General Requirements for Graphics

- ❑ All data, lines, text, labels, etc., in the graphics should be clearly visible
- ❑ Do not embed captions or descriptions in graphics, and avoid shadows, backgrounds, and outlined letters
- ❑ Do not use screenshots of data, especially energy dispersive spectroscopy (EDS), nuclear magnetic resonance (NMR) spectroscopy, and atomic force microscopy (AFM)
- ❑ Sizes: width of single column < 8 cm, width of full column < 16 cm, height < 24 cm
- ❑ Font: **Arial, 6–10 pt** is recommended
- ❑ Resolution: greater than **600 dpi**; single point/line, bitmap should be greater than **1200 dpi**
- ❑ Color: **RGB** mode (color printing, online color graphics)

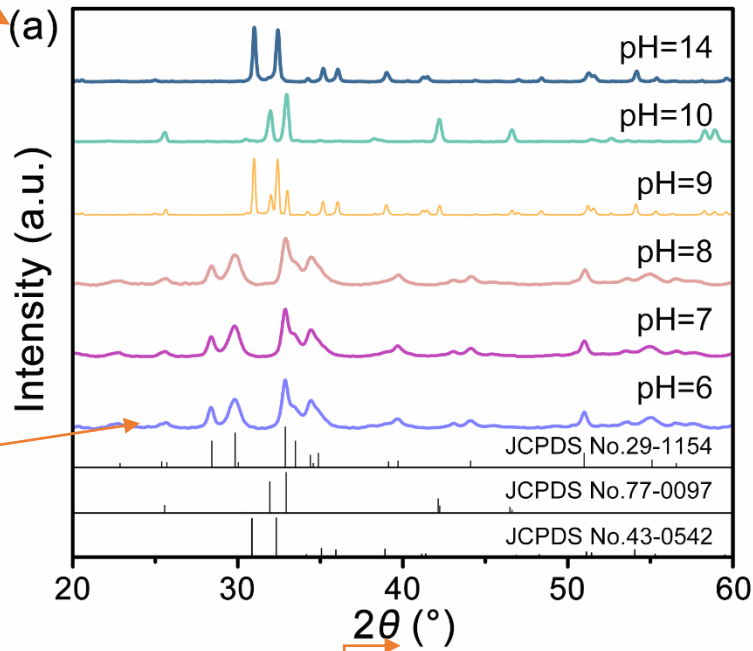
General Requirements for Graphics

- ❑ When multiple graphics share a title, each sub-graphic is labeled with the letters a, b, c (in parentheses), and all parts should be integrated into a single image
- ❑ First letter of first word of a phrase is capitalized, and the rest of letters are lowercase (proper nouns are generally capitalized in accordance with general convention for abbreviations)
- ❑ Physical quantities (e.g., pressure p , temperature T , time t), functions, variables, etc., are italic
- ❑ There are spaces between numbers and units
- ❑ Use SI units, derived units, and legal units of measurement in China
- ❑ Comma is added when the number of digits is greater than or equal to **5**, e.g., 52,000, 107,365
- ❑ No comma for the thousand value

Examples of Point, Line, and Other Types of Graphics

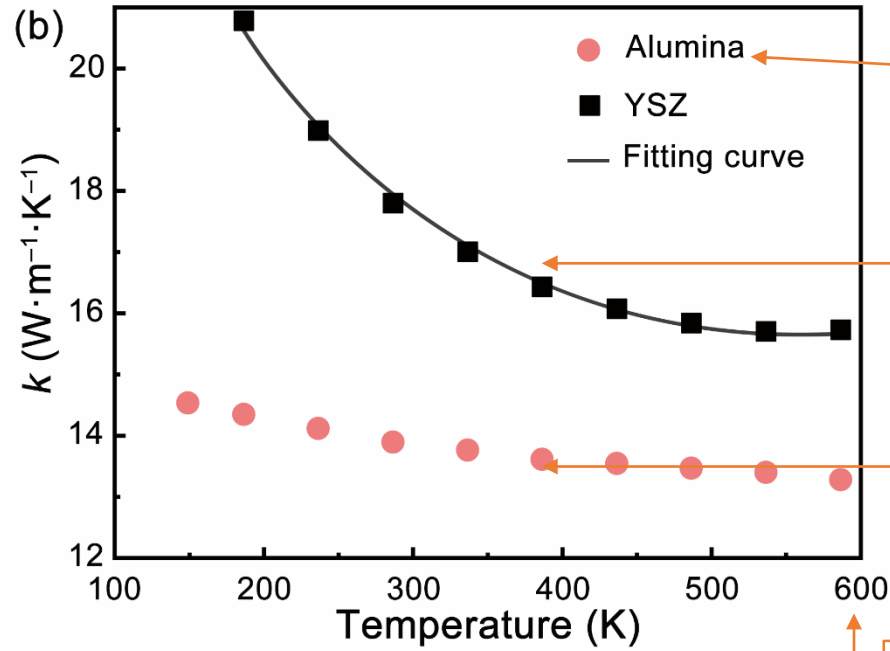
Width of single column < 8 cm, width of full column < 16 cm

Each sub-graphic is labeled with letters and parentheses, such as (a)



Lines in graphics are clear, with bright and distinguishable colors, of appropriate thickness, and in RGB color mode

Units in axis titles is enclosed in parentheses
Variables/physical quantities in italics followed by (unit), with space between them



First letter of first word of a phrase is capitalized
Proper nouns are generally capitalized

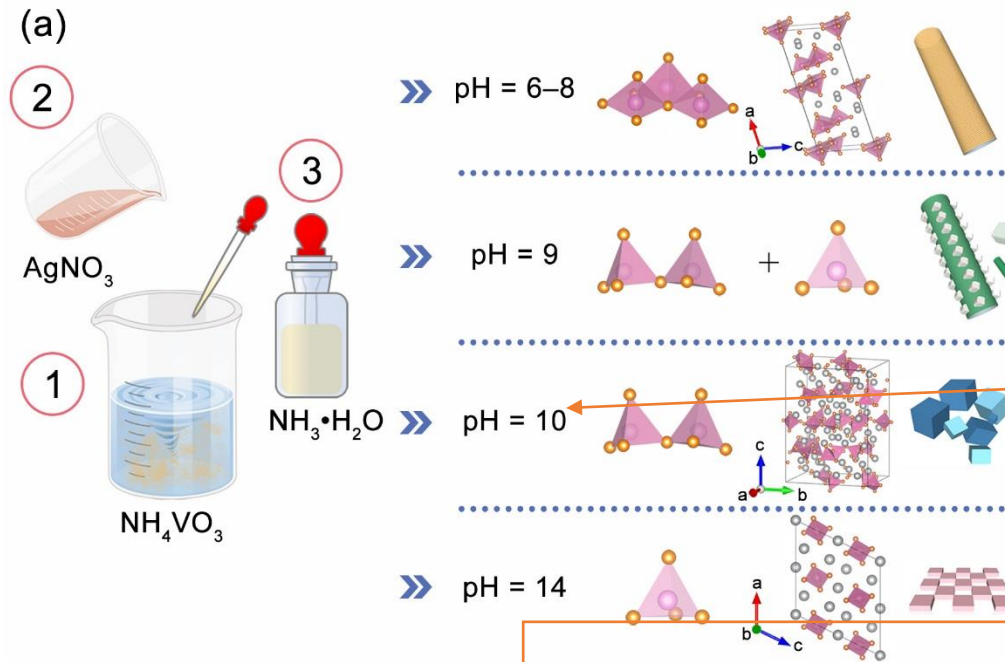
Point and line graphics with a resolution of > 1200 dpi

Use simple geometric symbols such as open and filled triangles, and squares, circles to represent data points

Font: Arial, 6-10 pt, as consistent as possible in size in final rendered state

Examples of Images and Combination Graphics

Height less than 24 cm



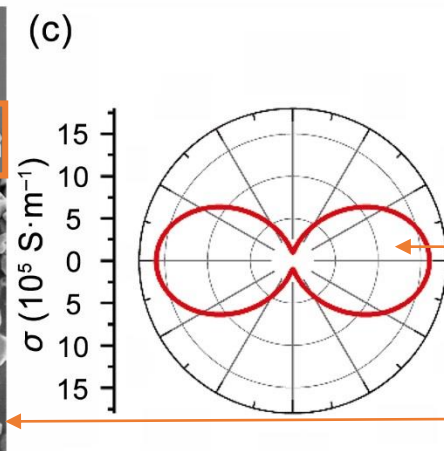
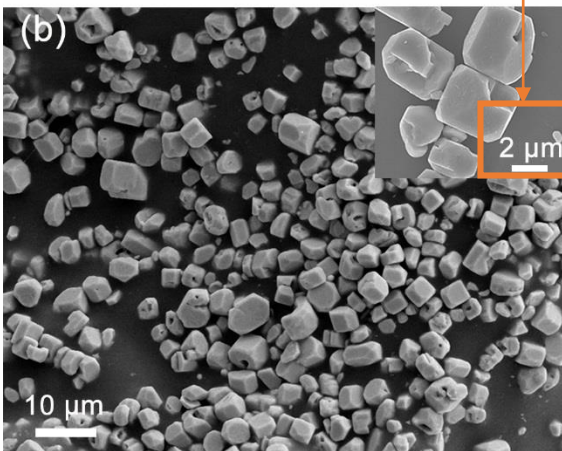
Combination graphic resolution ≥ 600 dpi

Combine them into a single image, and keep font size the same

Color: RGB mode and clearly distinguishable

Font: Arial, 6-10 pt

Electron microscope should crop the image of instrumental information in original diagram and accurately draw the scale according to original data
There should be spaces between numbers and units
Even embedded diagrams should have clear and readable labeling data



All lines, including axes, should be at least 0.1 mm (0.3 pt) wide
Do not use excessively thin lines

Do not alter aspect ratio of any graphic

Requirements and Examples of Graphical Abstract

Each paper must submit one graphical abstract to be placed in the Abstract section

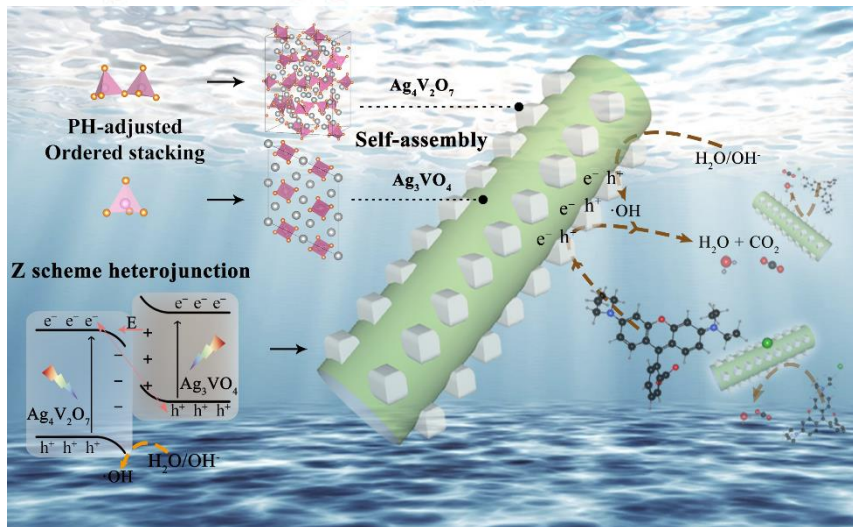
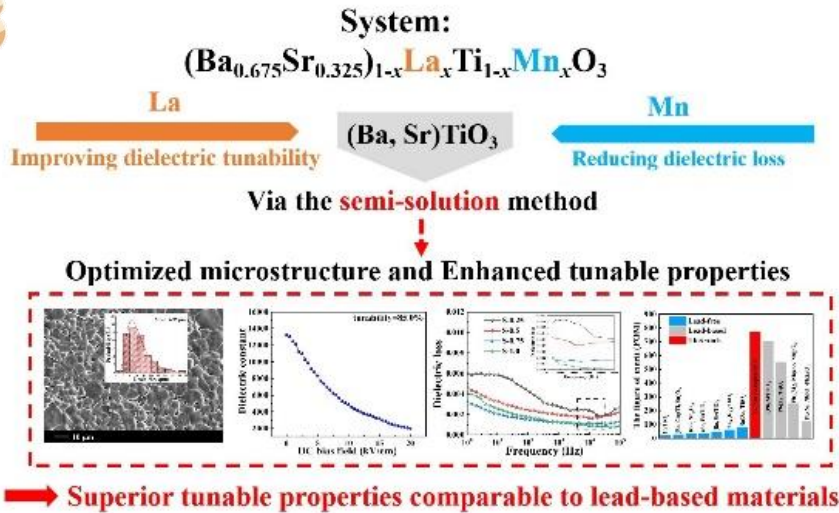
Graphical Abstract should be simple but informative, quickly conveying the essence of the paper

Specifics:

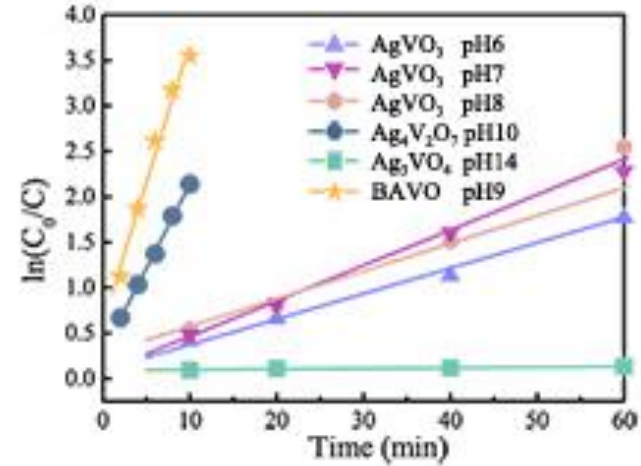
- ❑ Aspect ratio: **13 : 8** (*L : W*)
- ❑ Size: approximately 7.6 cm × 4.7 cm
- ❑ Resolution: **300 dpi** for color, 1200 dpi for black and white
- ❑ Format: **JPG or PNG**
- ❑ Color: **RGB** mode
- ❑ Font: Sans-serif fonts, such as Helvetica and Arial
- ❑ Labeling: easy to read, and font size no less than 6 pt
- ❑ Graphic can be pictures, tables, structures, etc., and their combinations
- ❑ Use rich colors and artistic design
- ❑ Graphic is produced in accordance with academic norms and professional publication standards
- ❑ Graphic must be completely original and unpublished work
- ❑ Do not include photographs or drawings of any individual
- ❑ Do not include any national stamps or currency, or trademarked items
- ❑ Avoid being identical to an image in the paper
- ❑ Avoid using long text expressions

Requirements and Examples of Graphical Abstract

Suggested examples of graphical abstract
Creative designs are expected!

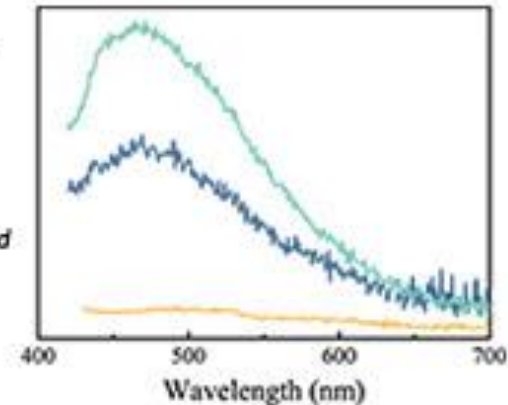


Unrecommended examples of graphical abstract
Out of size, low relevance, poor readability, low clarity, unattractive



Non-compliant sizes
Low resolution
Fuzzy text
Poor readability
Unclear main idea
Images in the paper

Superior tunable
EM absorption properties
of core-shell nanofibers
by the semi-solution method



Low resolution
Blurred text
Poor readability
Unattractive